



THE ISLE OF GIGHA HERITAGE TRUST

# NEWSLETTER

## MAY 2026

### DATES FOR YOUR DIARY

- June 5 to 7- Sound of Gigha Music Festival
- June 6 - Voices of Argyll Choir in the Church
- June 7 - Songs of Praise in the Church (TBC)
- June 14 - Church service with Tarbert (Zoom)
- June 18 - Community Council AGM
- June 28 - Church Service with Marion MacDonald
- July 7 - Pond dipping event with the Ranger
- July 17 - Moth monitoring event with the Ranger
- July 20 - Member face-to-face surgery sessions with directors Book at: office@gigha.org.uk
- July 21 - Big Butterfly Count event with the Ranger
- July 25 - Boathouse Raft Race & live music and ceilidh at the Village Hall.
- July 28 - Coastal Critters event with the Ranger
- July 30 - Member meeting/consultation
- August 8-12 - Dark Skies Gigha annual Perseids party + solar eclipse watch.
- August 22 - Furboch Ceilidh
- August 29 - Gigha Root & Industrial show
- Sept 21 - Member face-to-face surgery sessions with directors. Book at: office@gigha.org.uk
- October 29 - Member meeting/consultation
- Nov 16 - Member face-to-face surgery sessions with directors. Book at: office@gigha.org.uk

## SUPPORT TODAY AND TEE OFF TOMORROW!

A new golf season is upon us and Gigha Golf would like to thank all those who played last year and will play this year. The course is looking and playing well, however it is becoming increasingly difficult to sustain the course with ageing equipment, rising fuel costs and fewer members. We feel that the course adds a great deal to Gigha, but its upkeep is becoming more and more challenging - storm damage to the car park, ongoing drainage issues and maintenance of equipment all take their toll.

Without the volunteer efforts of a few the course would fail and that would be a sad sad day for Gigha.

So this is a request for assistance in any way possible - financial donation, join as a member (£90 / year) or think of adding Gigha Golf as a part recipient of any island fundraising events.

Golf has a long history on Gigha, lets try and keep that going for a few decades more. *Thank you from Gigha Golf*



Left: Gigha golf course looking in fantastic condition in 2026 thanks to the efforts of volunteers.

### IGHT CONTACTS

#### General enquiries:

office@gigha.org.uk or  
01583505390

#### Maintenance:

maintenance@gigha.org.uk  
07706353795

#### Island Ranger:

ranger@gigha.org.uk

#### Directors:

directors@gigha.org.uk

### OUR DEEPEST CONDOLENCES

It is with great sadness that we share the recent passing of our fellow islander James McNeill. Our thoughts are with his family at this sad time.

Right: Golfing on Gigha has been around for a long time. Here are a group of golfers on the 'Shore Green' at Gròb Bagh early in the 20th century.



Photo by

ON THE GOLF COURSE (Shore Green).  
(Daily Steamer passing in the distance).

Chas. Sinf. H. H. H. H.

## MEMBER FORUM

Thanks to everyone who has signed up so far for the Member Forum.

If you haven't joined yet, here is what you are missing.

It is updated throughout the month and announcements from the Trust will usually appear on the Forum first.

Join by going to [www.forum.gigha.org.uk](http://www.forum.gigha.org.uk)

If you have any problems joining or posting messages then we will do our best to assist.

If you need help then please just email [keith@gigha.org.uk](mailto:keith@gigha.org.uk)

**Policies**  
New Topic Search this forum  
8 topics Page 1 of 1

- HomeHunt guidelines  
Last post by IGHT Tue May 02, 2026 6:54 pm
- Community Fund guidelines  
Last post by IGHT Sat May 02, 2026 6:51 pm
- IGHT Asset Sale Policy  
Last post by Jane Macintyre Wed Apr 29, 2026 9:14 am
- IGHT GDPR Policy Summary  
Last post by Jane Macintyre Wed Apr 29, 2026 9:08 am
- IGHT Caravan Policy  
Last post by Jane Macintyre Wed Apr 29, 2026 9:04 am
- IGHT Dead & Fallen Wood Policy  
Last post by Jane Macintyre Wed Apr 29, 2026 9:01 am
- IGHT Memo & Arts  
Last post by Jane Macintyre Wed Apr 29, 2026 8:57 am
- Gigha 10 Year Plan  
Last post by IGHT Tue Apr 21, 2026 12:30 pm

**Announcements**  
New Topic Search this forum  
Mark topics read 11 topics Page 1 of 1

- Your Island needs you!  
Last post by IGHT Tue May 12, 2026 10:40 pm
- NEW FERRY MAINTENANCE CYCLE 2026  
Last post by IGHT Tue May 12, 2026 9:36 am
- Wind turbine temporary shutdown  
Last post by IGHT Mon May 11, 2026 3:30 pm
- EGM calling notice  
Last post by IGHT Wed May 06, 2026 10:39 am
- New lead gardener position filled  
Last post by IGHT Tue May 05, 2026 12:15 pm
- IGHT Board makeup  
Last post by IGHT Tue May 05, 2026 12:00 pm  
Replies: 1
- Message from Adam Murphy re resignation  
Last post by IGHT Tue May 05, 2026 11:59 am
- Roads consultation returns from members  
Last post by IGHT Fri May 01, 2026 2:50 pm
- Latest MUGA photos  
Last post by IGHT Fri May 01, 2026 1:03 pm
- Trust Board change - 1May  
Last post by IGHT Fri May 01, 2026 12:58 pm
- MUGA work underway  
Last post by IGHT Sun Apr 26, 2026 1:31 pm

**Discussion**  
New Topic Search this forum  
Mark topics read 3 topics Page 1 of 1

- Management of camper vans/motorhomes  
Last post by IGHT Sun May 03, 2026 2:37 pm
- Dog fouling  
Last post by IGHT Sun Apr 26, 2026 1:38 pm
- Dancing Ladies  
Last post by IGHT Thu Apr 16, 2026 9:58 pm  
Replies: 1

**Memos**  
New Topic Search this forum  
5 topics Page 1 of 1

- Memo 9 (May 2026)  
Last post by IGHT Fri May 08, 2026 2:08 pm
- Memo 8 (April 2026)  
Last post by IGHT Fri May 01, 2026 2:39 pm
- March 2026 memo  
Last post by IGHT Sun Apr 26, 2026 12:50 pm
- Memo 7 (April 2026)  
Last post by IGHT Mon Apr 20, 2026 9:35 pm
- Memo 6 (April 2026)  
Last post by IGHT Thu Apr 16, 2026 8:29 pm

**Newsletters**  
New Topic Search this forum  
2 topics Page 1 of 1

- April 2026 newsletter  
Last post by IGHT Fri May 01, 2026 12:36 pm
- March 2026 newsletter  
Last post by IGHT Sun Apr 26, 2026 12:33 pm

## QUESTIONS - ANSWERS - SUGGESTIONS

**Q:** I am a member of the community but not a member of the Trust and as such I have never been sent a copy of the Newsletter.

**A:** Trust information for members now mostly appears on the Member Forum and also in Member Memos. The Newsletter will continue to be more community oriented. So, any member of the community can now access the Newsletter. Please pass your email address to the Trust office stating that you wish to receive each Newsletter and you will be added to the distribution list. If you know of someone else who would like to be added to the distribution list then we would be happy to do this.

**Q:** Why did Adam Murphy resign from the Trust?

**A:** Here is the reason straight from Adam - *just by way of explanation, I had a meeting with my editor recently and I immediately realised that I would not be able to maintain even a skeleton commitment to the Trust while getting all my work done this year. This is good news for me and my family, however, I am very sorry that I have not been able to stay on as Chair to see through some of the work that I have started.*

**Q:** Summer benches - could a bench be added down by the South Pier for locals and visitors to rest weary legs?

**A:** We only have a limited number of benches to share between the gardens and across the island. We will do our best to meet your request.

**Q:** Why are the old Gigha photos being removed from the hotel?

**A:** The walls of the bar area and elsewhere in the hotel continue to have many old Gigha photos and artwork on display. The ones which were mentioned in recent Facebook posts were boxes of photos discovered in storage during refurbishment. These delicate and valuable heritage photos will be kept safe for future display when a Gigha Heritage Centre is eventually established.

## POTHoles, POTHoles AND MORE POTHoles

Gigha Community Council have recently had many approaches from both local residents and visitors about the appalling state of the island's road. The Community Council have made several approaches to Argyll and Bute Council on this matter and have received the following information back from the relevant council department.

*"The local team have been over carrying out drainage works and there are patching works planned towards the end of May 2026.*

*As regards the 2026/27 Capital programme there is an allocation of £80k for surfacing later this year. At the moment this work is programmed for August-September and is planned for north of the village."*

## CHURCH NEWS

Lyn is currently on compassionate leave. The work to the Church is still not finished but we are already feeling the benefit of the work done to date. An anagram quiz for church funds is available from Susan or GNS. Only £1 (Closing date July 4).

# Achamore gardens



## **WELCOME JOHN!**

A special warm Gigha welcome to John Miller from Tayinloan who has been appointed to the position of Lead Gardener at Achamore Gardens.



John's previous post was Head Gardener at Ardmore House on the Ardtalla Estate on Islay. Previous to that he was Head Gardener at Highfields Estate and Estate Manager at Castle Hill Estate. He is also a qualified tree surgeon. The Trust will continue to use Morgan Russell to support the gardens during the transition.



Have you taken a stroll around Achamore Gardens recently? The spring blooms are looking amazing at this time of year. As well as enjoying the colour and scents of the flowers you might just come across Maurice and John, our two gardeners, who are hard at work keeping on top of garden tasks to ensure Achamore Gardens is looking at its best in 2026. Please note that the toilets near the walled garden are currently being painted by an island volunteer.

## GIGHA COMMUNITY COUNCIL NEWS

**Calmac meeting:** A suggested ferry maintenance period was proffered by Calmac - either a morning a week or a day a month throughout the year. The latter seems the least disruptive but will have an impact on island businesses. GCC to go back to Calmac to clarify what will take place in these periods of maintenance, why they can't be accommodated by extending the current annual maintenance and what provision is to be made if monthly is to be implemented as Gigha's is a lifeline service. It's noted that other routes already have this regular maintenance period but as Gigha only has one route in and out - this complicates matters further. Once Calmac replies a meeting will be held for the community to discuss this issue.



**Ferry priority for residents:** Our Community Council are in the initial stages of discussion with Transport Scotland to explore the possibility of having an island resident priority system in place on the Gigha ferry. Initial correspondence has been positive.

### NEED TO CONTACT GIGHA COMMUNITY COUNCIL?

**Facebook:** Gigha Community Council

**E-Mail:** [gighacommunitycouncil@outlook.com](mailto:gighacommunitycouncil@outlook.com)

## MUGA CONSTRUCTION COMPLETE

Construction of Gigha's MUGA is now complete which is great news for our community. The photos below show the final stages of construction during the month of May.

Special thanks to tenant farmer Neil Bannatyne for agreeing to have this fantastic community resource in one of his fields and we apologise to Neil for all the hic-ups during the construction phase.

We look forward to seeing Gigha's Multi Use Games Area being well used by island residents of all ages in the months and years ahead.

Look out for details of a special 'not to be missed' community MUGA opening event which will be announced soon.



## NEWSLETTER SUBMISSION CHANGES

Please note that it is now an island volunteer producing the monthly newsletter. Groups should ensure submissions, such as event dates, reports, event posters and photos etc are received by no later than the **20th of the month**. Anything submitted after that date will not be able to be published in that month's newsletter but if the item is still appropriate it will be held over for inclusion in the following month's newsletter. Send submissions to: [office@gigha.org.uk](mailto:office@gigha.org.uk) Thanks for your contributions!



We realise that not everybody in the community has had the chance to take a look at the Gigha Hotel refurbishments that have been taking place recently, so here is a photo collage showing our hotel in May 2026. Needless to say, the refurbishment has been a major challenge for the Trust. The hotel now has new electric heating, solar panels, a large generator for use during power cuts, a refurbished kitchen, dining room and bar with rewiring having been completed in several areas.

A number of bedrooms have been refurbished although that work is continuing as is work on the reception and rear dining room. Recently, John and Janette McKie have been appointed as manager and assistant manager, with Adam Wool as chef and other staff appointments have been made. Further hotel staff jobs have also been advertised.



Donald hard at work in the hotel kitchen.



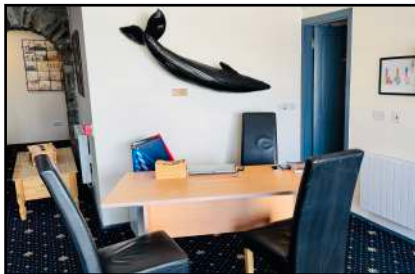
Adam, hotel chef, preparing food for hungry visitors.



The rear dining room - still a work in progress - a bar has been constructed at the far end.



The front dining room which will eventually be a lounge and function area. Artwork by local artists decorate the walls.



Above & right: The hotel reception area



Left & right: The hotel bar with staff member Lynsey pulling a pint for a thirsty guest.



Above & right: One of the hotel's stunning en-suite bedrooms



Above: Solar panel installation complete.



Planning permission has been secured from Argyll and Bute Council for new developments at Gigha Motorhome and Campsite. The Trust has no immediate funds available to deliver these plans at this time and the work will likely be done in stages when finance becomes available. The Trust are keen to take the next steps to grow our highly popular campsite to meet the needs of the island's demands.

The work will include additional Motorhome/campervan pitches, a shelter for campers and family pod accommodation. See the plan outlined in blue below for the proposed changes.

Isle Of Gigha Heritage Trust  
 MH Planning Associates  
 63 West Princes Street  
 Helensburgh  
 Argyll And Bute  
 G84 8BN

I refer to your application dated 22nd April 2025 for planning permission in respect of the following development:

**Use of land for the siting of 4 holiday pods and timber shelter, formation of 3 additional campervan hardstandings and associated works**

**AT:**

**Isle Of Gigha Camp And Motorhome Site Ardmnish Isle Of Gigha Argyll And Bute PA41 7AA**

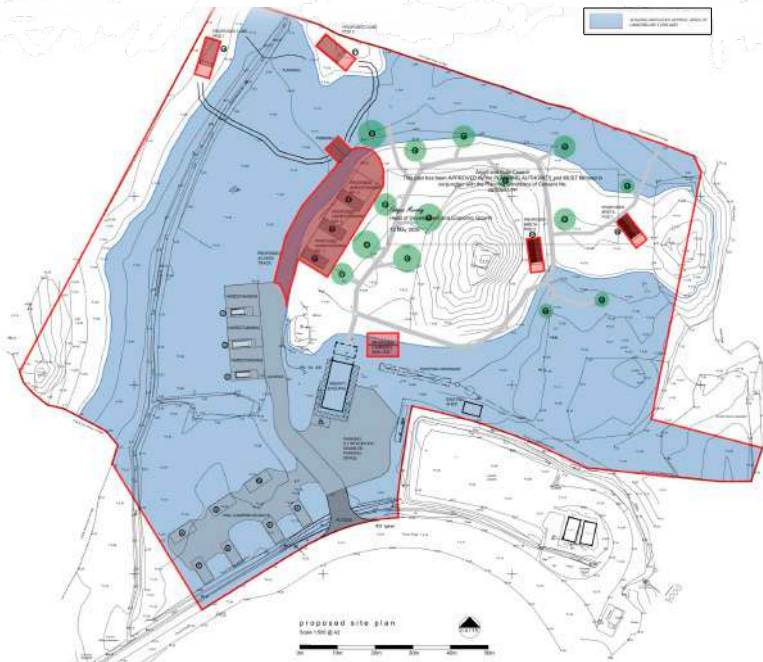
Argyll and Bute Council in exercise of their powers under the above mentioned Act and Regulations hereby grant planning permission for the above development in accordance with the particulars given in the application form and docketed plans subject however to the conditions and reasons detailed on the following page(s).

It should be understood that this permission does not carry with it any necessary consent or approval for the proposed development under other statutory enactments and is not a Building Warrant.

Dated: 13 May 2026

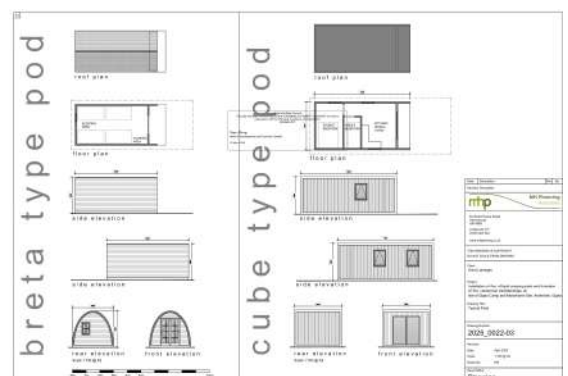
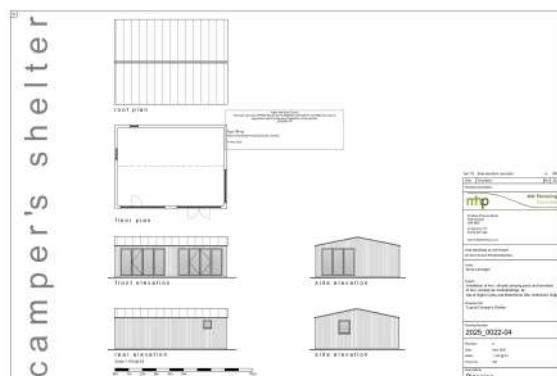


	<b>MH Planning Associates</b> 63 West Princes Street Helensburgh Argyll And Bute G84 8BN Tel: 01436 811111 Email: info@mhplanning.co.uk www.mhplanning.co.uk
<b>Project Name:</b> Isle Of Gigha Camp And Motorhome Site Ardmnish Isle Of Gigha Argyll And Bute PA41 7AA	<b>Project Number:</b> 2025_0022-01
<b>Client:</b> Isle Of Gigha Heritage Trust	<b>Scale:</b> 1:500
<b>Drawn By:</b> MH Planning Associates	<b>Check By:</b> MH Planning Associates
<b>Date:</b> 13 May 2026	<b>Project Status:</b> Planning



- Top left: Approval letter from A&B Council.
- Top right: The existing layout of the campsite.
- Mid left: The planned layout of the campsite.
- Bottom left: Plan for the campers' shelter.
- Bottom right: Plans for the family holiday pods.

This information first appeared on the IGHT Member Forum on 15 May.



## OUT & ABOUT WITH THE RANGER



**Top:** A group of Sand Martins nesting on Gigha was a nice surprise this month. They came all the way from south of the Sahara to stay with us for the breeding season.

**Middle:** Locals and visitors can't have failed to notice the swathes of bluebells across the island this month. Simply stunning to see these beautiful wild flowers everywhere.

**Bottom:** One of the best parts of rangership in the summer months are wildlife hunts! We will be undertaking weekly cetacean shorewatches for Whale and Dolphin Conservation, butterfly transects for Butterfly Conservation Scotland, Achamore Gardens Gigha pond surveys, monthly bat Sunset Surveys for the Bat Conservation Trust, and of course continuing with Wetland Bird Surveys and general bird records for the British Trust for Ornithology.

## A NEWBIE'S VIEW FROM THE DARK SIDE !

*The content of this short article reflects my personal perspectives and experiences of being a new member on the IGHT Board. It is not in any way approved by IGHT, or supported by Trust directors or staff. It is just my personal opinions which I hope islanders might find useful to read. Keith Wilson*

Although Gigha has been my permanent home for over seven years, I have been a Trust Board member for just two months, co-opted, and more recently, elected. I joined because I believed I could use the skills gained during my career to specifically improve communications between members and the Trust although my remit has expanded considerably in a very short time.

When I first arrived on the island, a resident told me that the Trust was 'evil' and to keep well clear! Now, I can't comment about the situation seven years ago, but today I find I am working alongside extremely dedicated volunteers and paid staff who go well beyond what is expected of them, sometimes with meager resources, simply because they want the very best for this island that we all call home.

The key word here is volunteer - I gain nothing from being on the Trust Board. In fact I actually lose out, as a fair amount of my personal time is now taken up dealing with Trust issues. Trust meetings take place twice a month and involve healthy discussions; sometimes extremely difficult decisions have to be made; directors don't always agree; compromises happen; however the meetings are calm and everyone has their opinions respected. In addition, sub-committees of directors meet at other times during the month to cover specific issues. Hardly a day goes by without having to deal with some Trust matter.

We have First Responder volunteers, we have Fire Service volunteers, we have Coastguard volunteers, we have Golf Course volunteers and we have volunteers who undertake heritage, garden and conservation tasks. We have volunteers who help at a whole range of events every year. However IGHT volunteer directors are treated/regarded very differently despite simply being island residents volunteering to make things better like all the other volunteer groups.

Some members of our community unfortunately treat those in anyway involved with IGHT as if we have moved over to the 'Dark Side'. Yes, for those Star Wars fans out there, for seven years I was Anakin Skywalker but for the last two months I have suddenly become Darth Vader in some people's eyes!



Why do island volunteers with the Trust get such a poor reputation? Is it personality clashes? Is it something historical from earlier years? Is it the 'landlord' effect? None of us are perfect and we do make mistakes just as larger organisations such as governments do!

Any adult on Gigha has the opportunity, annually, to get elected onto the Trust Board. I know lots of people in our community have done this in the past. It was also heartening to have four nominations submitted at the recent EGM. Unfortunately two were ineligible as they had been Trust members for less than a year. That won't be the case come the AGM so I hope they resubmit their applications at that time.

An ideal situation would be a volunteer Trust Board with a good mix of young and old, male and female, tenants and private house owners, business owners, and all of them with different skills. These people currently reside on Gigha. The opportunity is there to achieve this. Working together and supporting each other is the way forward - let's banish the 'Dark Side' for good and support **all** of our island volunteers regardless of what it is that they volunteer for.

May the Force be with you good people of Gigha!

***Have your say about this on the Member Forum Discussion page - just please be kind and courteous!***



**29th August 2026,  
Village Hall, 2pm**

More information to follow about arrangements on the day. All entries £1; Teas/coffees/cakes £3; Raffle.

All proceeds to Village Hall funds.

Any queries please contact: Tracy Wilson or June Watson

**Agricultural Section**

6 same colour hen eggs

6 assorted colour hen eggs

**Root section**

3 potatoes

3 parsnips

3 carrots

3 red onions

3 white onions

3 beetroots

3 leeks

3 tomatoes

1 ugly vegetable

1 exotic vegetable

**Industrial Section**

Glass iced tea (any flavour)

3 Belgian buns

1 lemon drizzle cake

3 plain scones

3 oatcakes

2 small chicken & leek pies

Jar pickled veg (any veg)

Floral garden arrangement (wild and/or homegrown)

Photograph of a bird on Gigha

Poem about your favourite subject

Crochet, knit or cross-stitch a bookmark

A favourite trinket/ornament starting with 'B'

**The Sound of Gigha**

Friday, 5th June

**CULLA**  
FRIDAY HEADLINER

+ Support from  
**MHĀIRI & RON**

Saturday, 6th June

**DLŪ**  
SATURDAY HEADLINER

+ Support from  
**REELY JIGGERED**

**THE SOUND OF GIGHA GIGHA**

**MAKERS MARKET**  
GIGHA HOTEL COURTYARD

**SATURDAY, 6 JUNE 2026**  
10 AM - 4 PM | ADMISSION FREE  
BOOK A STALL | COST: £15 PER STALL

ART, CRAFT, JEWELLERY, DESIGN,  
LOCAL PRODUCE & MORE!

FOR MORE INFORMATION EMAIL:  
[thesoundofgigha@gmail.com](mailto:thesoundofgigha@gmail.com)

**The Sound of Gigha Music Festival  
is arriving in just a few days!  
Enjoy!**

**June 5-7 2026**